

City of Richmond Department of Public Utilities

BYRD PARK TANK REHABILITATION NEWSLETTER

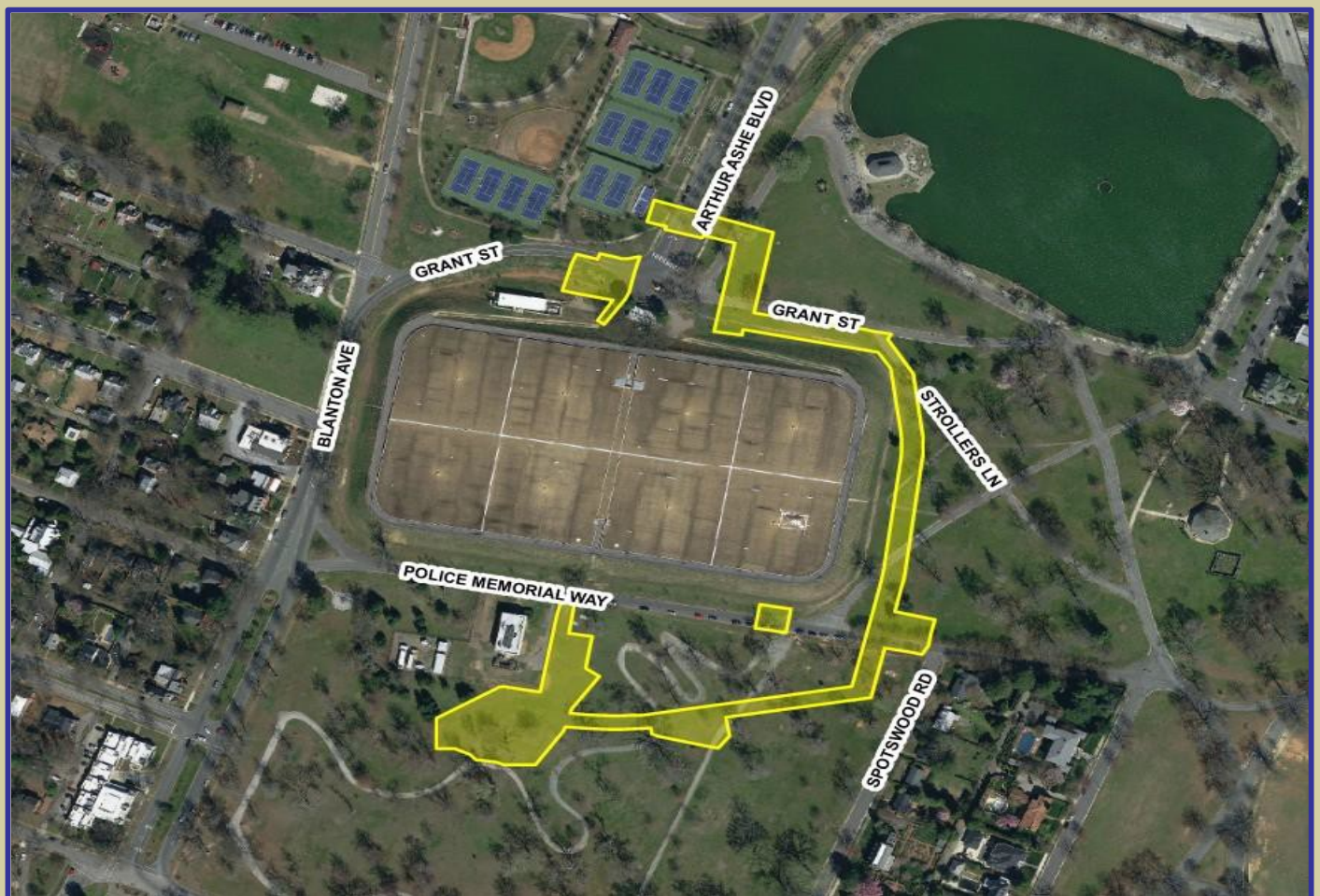
The Byrd Park Reservoir was built in 1876 and has been serving the City of Richmond residents and surrounding counties continuously since then. The Reservoir operates as two finished water tanks. Upgrades and maintenance have occurred over the years to ensure peak operating capacity. DPU is in the process of additional upgrades to improve the distribution system reliability and increase the operational flexibility of facilities associated with the Reservoir. This tank rehabilitation project will be completed in two phases.

PHASE I – SUMMARY

The City of Richmond is constructing a water distribution system upgrade located adjacent to the water storage tank in Byrd Park. The purpose of the Byrd Park Zone 1N Supply Main and Inlet Valve Replacement work is to improve distribution system reliability and increase the operational flexibility of facilities associated with the Tank. The Phase 1 work area is highlighted in the Figure below. See reverse for more information.

PHASE II – SUMMARY

The Byrd Park Tank concrete roofs are reaching the end of their useful life and will be replaced by new aluminum roofs in Phase II. Some portions of this work will occur concurrent with Phase I construction.



BYRD PARK TANK REHABILITATION NEWSLETTER (continued)

What is happening now?

Construction of Phase 1 of the tank rehabilitation project will start this summer. This phase of the project is to improve distribution system reliability and increase the operational flexibility of facilities associated with the Reservoir. Phase I consists of pipe construction and replacement adjacent to the Reservoir. Phase II of the project, Byrd Park Tank Roof Replacement will begin late 2021.

How long will this project last and will work impact my water service?

Project work has been planned to allow the water system to remain in service throughout the anticipated four year construction effort. This project has been designed and construction efforts phased so as not to impact water service.

Will this project impact access to Byrd Park or Park events?

The park will remain open. Construction will be sequenced to maintain use of the park. Construction will take place within a fenced area whose boundaries will shift as the work progresses. Access to the rest of the park and its trails will be open to the public. DPU has and will continue to work closely with the Department of Parks, Recreation and Community Facilities (PRCF) to ensure park events can continue as planned.

Will this project impact traffic in the area?

Some short-term road and lane closures will be needed on roads around the Reservoir. Public notification will take place prior to the road closures. Be sure to follow @DPUStreetNews on Twitter for this and all road closures.

Will this project impact on-street parking?

During construction, on-street parking may be temporarily restricted during lane or road closures. Signs will be posted in advance.

When will this work be performed?

Work may be performed between the hours of 7:00 a.m to 5:00 p.m., Monday through Friday. Some isolated construction tasks may need to be performed after-hours or on weekends.

Will trees be affected by this project?

Some trees will be removed. The tree removals and planned replacements have been reviewed and approved by representatives of PRCF and the City's Arborist. Park restoration efforts, to include replacement of trees, will occur at the conclusion of Phase II of the project.



**IF YOU HAVE QUESTIONS,
CONCERNS OR COMMENTS
ABOUT THE PROJECT, PLEASE
CONTACT:**

Ricky Hatfield,
Capital Projects Manager, Sr.
Department of Public Utilities
804-646-1933
Ricky.Hatfield@richmondgov.com

Mayor Levar M. Stoney



CITY OF RICHMOND
DEPARTMENT OF PUBLIC UTILITIES



MEDIA CONTACT:

Rhonda Johnson,
Acting Public Information Manager, Sr.
Department of Public Utilities
804-646-5463
Rhonda.Johnson@richmondgov.com